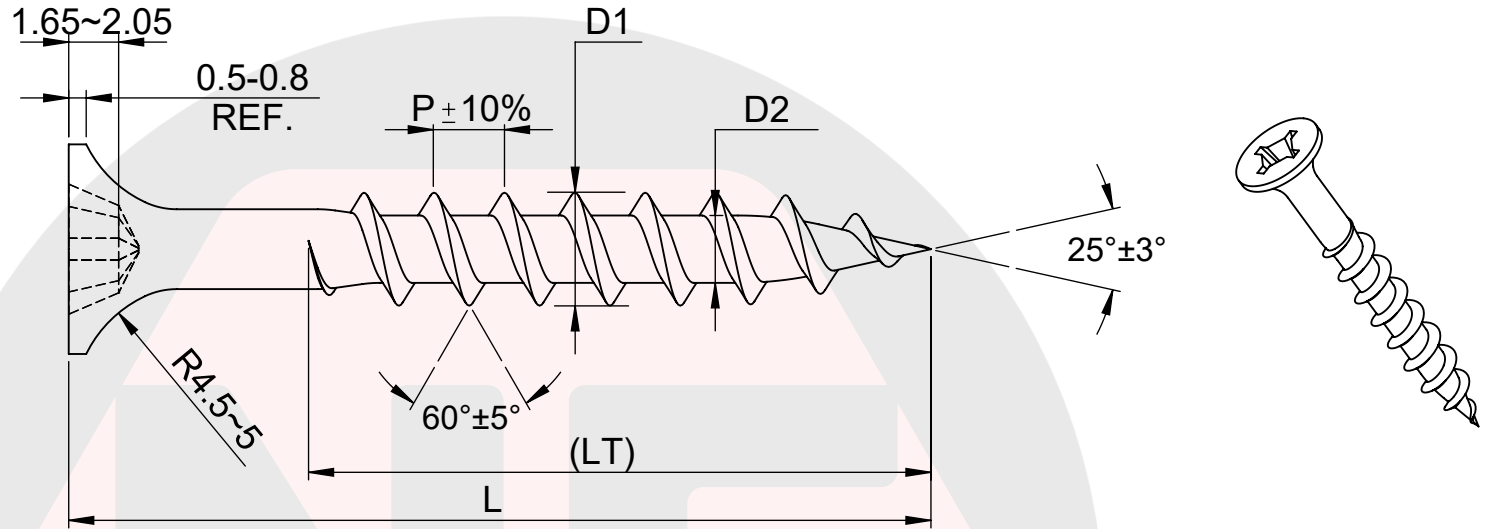
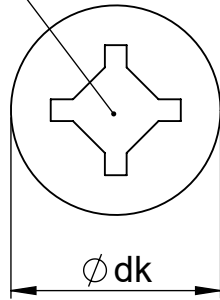


#2 Phil/SQ
combo



Dimensions	Ødk	P	D1	D2	wire Ø	case depth	breaking torque	L
#6	8~8.5	2.82	3.65~4	2.2~2.4	2.85	0.05~0.18	28 kg-cm	1, 1 ¼, 1-5/8
#8	8~8.5	2.82	4.35~4.75	2.6~2.8	3.3	0.05~0.18	35 kg-cm	2
#9	8.5~9	2.82	4.3~4.8	2.9~3.1	3.5	0.1~0.23	55 kg-cm	2-½, 3
#10	8.8~9.2	3.12	4.9~5.35	3.2~3.4	3.8	0.1~0.23	67 kg-cm	3-½, 4

L	1	1-1/4	1-5/8	2	2-1/2	3	3-1/2	4
L tolerance	24.4~26.4	31~32.5	40.5~42	49.6~51.5	62~65	74.7~77.7	87.4~90.4	100.1~103.1
LT	full	full	28~31	34~37	41~44	51~54	60~63	60~63

Grey Coat Bugle Phillips/Square Combo Deck Screw

Head Type: Bugle Head	Material: 1018-1022 carbon steel	Core Hardness:	Drawn: Jesse Chen
Recess Type: Combo	Surface Hardness: 450-720 HV	Case Hardened Depth:	Checked: Allen Lee
Thread Type: CS	Torque:	SST: 1000 HRS	
			Client: USNNC



New Fastener LLC
<http://www.newfastener.com>

Drawing No. S10111420151

Rev. 1

SHEET 1 OF 1